

EPOXY TILE GROUT 3P



Product Attributes

UV Resistance

Suitable for use in outdoor applications



Low Shrinkage

Suitable for wide grouting up to 15 mm

Stainless

Will not be stained by any food materials or chemicals



Easy Maintenance

Easy clean for smoothened texture

Water Resistant

Brilliant water-proofing in wet areas



Cohesiveness

Durable & non-sagging, easily applied to vertical surfaces



Adhesion

Excellent adhesion



Product Description

HS Epoxy Tile Grout 3P is a three component epoxy grout. It is used for joints from 2 to 15mm on flooring and walls, glass mosaic, ceramic tile, vitrified tile, marble and stone. It has a lasting chemical and mechanical performance that ensures high resistance coverings. It's sealed membrane is hard wearing and hygienic but also attractive in cosmetic finish that is available in various shades.

Technical Information

Application Properties (Base+Hardener+Filler)

Testing Properties	Test Results
Component Appearance	Base (Part A) – Clear Viscous Liquid Hardener (Part B) – Yellow Viscous Liquid Filler (Part C) – Coloured Powder
Mixing Ratio	Base 0.950 kg + Hardener 0.400 kg + Filler 3.650 kg
Mixed Material Consistency	Smooth Creamy Paste
Mixed Density	1.75 ± 0.05 kg/L
Pot Life @30°C	Min. 60 min.
Joint Width	2-15 mm
Sag Resistant	No-sag
Application Temperature	From +10°C to + 35°C
Temperature of Use	From -20°C to 100°C
Light Foot Traffic	3 days
Available Shades	27 shades

PERFORMANCE PROPERTIES

Comprehensive Strength after 7 days	>50 Mpa
Flexural Strength after 7 days	>30 Mpa
Shear adhesion Strength after 14 days	≥ 30 KN
Water Absorption	≤0.5
Pull-Off Adhesion Strength	≥ 1.5 Mpa (Concrete Failure)
Total VOC Content (EPA 24 method)	< 8 g/kg

Coverage

Consumption table dependent on the size of the tiles and width of the joints (kg/m²)

Tile Dimension (mm)			Joint/ grouting Width (mm)							
Length	Width	Thickness	2	3	4	5	6	8	10	12
25	25	6	1.68	2.52	3.36	4.20	5.04	6.72	8.40	10.1
25	50	6	1.26	1.89	2.52	3.15	3.78	5.04	6.30	7.56
50	50	6	0.84	1.26	1.68	2.10	2.52	3.36	4.20	5.04
100	100	6	0.42	0.63	0.84	1.05	1.26	1.68	2.10	2.52
100	100	10	0.70	1.05	1.40	1.75	2.10	2.80	3.50	4.2
300	200	6	0.18	0.26	0.35	0.44	0.53	0.70	0.88	1.05
300	300	6	0.14	0.21	0.28	0.35	0.42	0.56	0.70	0.84
450	300	6	0.12	0.18	0.23	0.29	0.35	0.47	0.58	0.7
600	300	6	0.11	0.16	0.21	0.26	0.32	0.42	0.53	0.63
600	600	8	0.09	0.14	0.19	0.23	0.28	0.37	0.47	0.56
800	800	8	0.07	0.11	0.14	0.18	0.21	0.28	0.35	0.42
1000	1000	10	0.07	0.11	0.14	0.18	0.21	0.28	0.35	0.42
1200	600	10	0.09	0.13	0.18	0.22	0.26	0.35	0.44	0.52
1200	800	10	0.07	0.11	0.15	0.18	0.22	0.29	0.36	0.44
1200	1200	12	0.07	0.11	0.14	0.18	0.21	0.28	0.35	0.42
1600	800	12	0.08	0.12	0.16	0.20	0.24	0.32	0.39	0.47
1800	1200	12	0.06	0.09	0.12	0.15	0.18	0.23	0.29	0.35

*The coverage mentioned in table is indicative only and can vary as per the tile size, thickness, joint width & wastage during application.
Formula For The Coverage Calculation : $C = 1.75 \times H \times T \times [(L + W) / (L \times W)]$; C - Tile grout coverage (kg/m²), H - Thickness of tile (mm), T - Width of joint (mm), L - Length of tile (mm), W - Width of tile (mm)

EPOXY TILE GROUT 3P



Packs



1 kg



5 kg

Shelf Life



Best before 24 months from the date of production, if stored properly in unopened, undamaged, original factory sealed packaging in dry conditions at (5-30)°C with protection from direct sunlight.

Storage



Store in cool & dry place

Recommended Use

HS Epoxy Tile Grout 3P is specifically designed for critical joints between, the kitchen tiles, bathroom, swimming pool & high trafficked areas.

Substrate Preparation

- Ensure 24 hours' time interval for grouting after tile fixing
- The joints must be dry, clean, free of dust & adhesive
- Emptied at least 2/3 of the tile thickness depth
- Before grouting, make sure that the installation the adhesive has set and released most of its moisture
- The joints should not be wet during work
- Put masking tape by side of grouting space or sealer if necessary

HOW TO USE



1

The kitchen & bathroom joints where the grout is going to be applied, needs to be cleaned with water before 24 hrs of application.



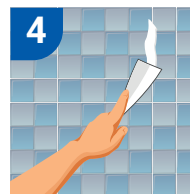
2

3 part epoxy consists of Resin(A), Hardener(B) & Filler(C). Part A & B to be mixed thoroughly in desired ratio.



3

Add part C gradually until a homogeneous paste is created.



4

The joint of the tiles must be filled with the help of a rubber float.



5

The tiles must be cleaned with a wet sponge, after sometime.



6

In the end, let the floor dry before using.

Health & Safety Precaution

- Avoid contact with skin, eye or mouth. To wash irritated skin with soap and clean water for eyes and mouth. Remove contaminated clothes
- In case of ingestion, vomiting should not be induced. Nothing should be given orally to an unconscious person. A physician must be contacted
- Contact with food stuff and utensils must be avoided
- Keep away from children. Please consult the respective MSDS prior to use

Version No: BPP2/12/2023. Please note that this data sheet supersedes all previous versions.

BERGER PAINTS INDIA LIMITED

Berger House, 129 Park Street, Kolkata 700 017 | **CONSUMER RELATIONS MANAGER** Ph: 1800-103-6030
Fax: 91-33-2249-9729/9009 | SMS BERGER to 56767 | Email: consumerfeedback@bergerindia.com | www.bergerpaints.com